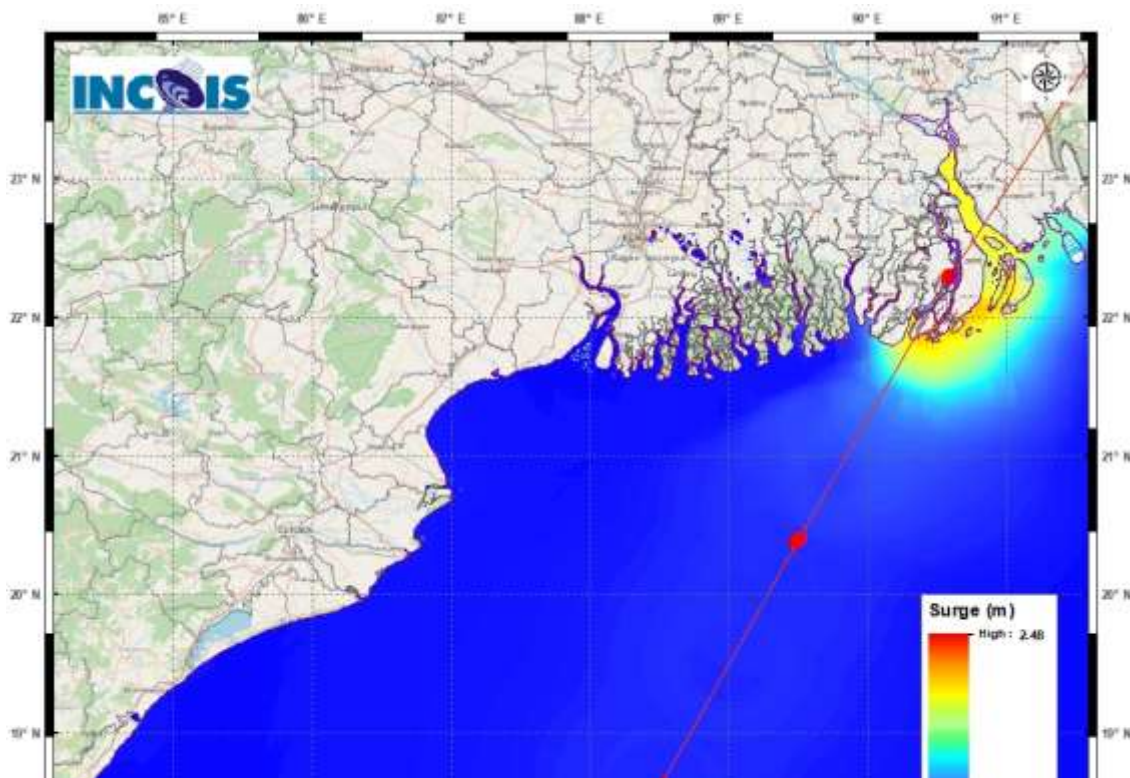


STORM SURGE GUIDANCE BASED ON 0600 UTC OF 23rd October, 2022

- (i) Tidal wave of about 2.0 m height above astronomical tide is likely to inundate low lying areas of Bangladesh coast near the landfall area around the time of landfall.
- (ii) Tidal wave of about 1.0 m height above astronomical tide is likely to inundate low lying areas of West Bengal (North & South 24 Parganas) around the time of landfall.
- (iii) Astronomical tide of about 5-6 m height is likely along & off West Bengal-Bangladesh coast on 25th October.



Storm Surge Warning Graphics based on forecast of 0530 hours IST